

Blackpool Central MSCP

Brief: Design and build a MSCP - Fully Turnkey

Client: Nikal (CBRE acting as clients agents)

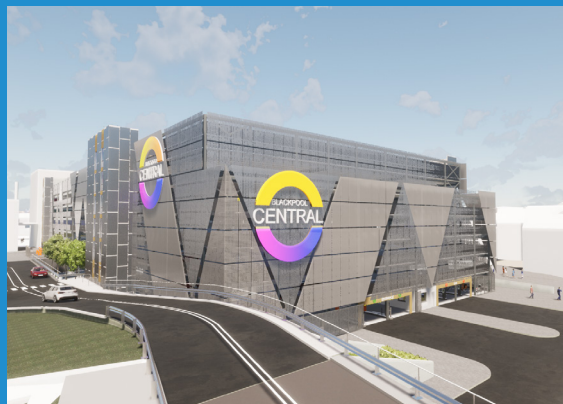
Design Team: Stripe consulting (Car park designer), Spawforths (Master Architects and planning consultants)

Contract Value: Approx £25M

Construction Period: Approx 60 weeks

Status: On-site

Configuration: 1306 parking bays. GF + 5 with external 'D' ramps.



Ballast Nedam Parking are delighted to announce that work started on site with this project in January 2022. The new multi-storey car park is one part of the £300m Blackpool Central Leisure complex and just one of the numerous projects underway as part of the exciting Blackpool Regeneration programme.

Nikal and Blackpool Council identified the benefits of engaging contractors early to inform the process, deliver the most optimised solution and the best possible value. Ballast Nedam were fortunate to be involved from the very early design stages and worked closely with the client team to great effect. Collaborating with the wider master plan architects and planning team,

Ballast Nedam were an integral part of the projects design and planning stages.

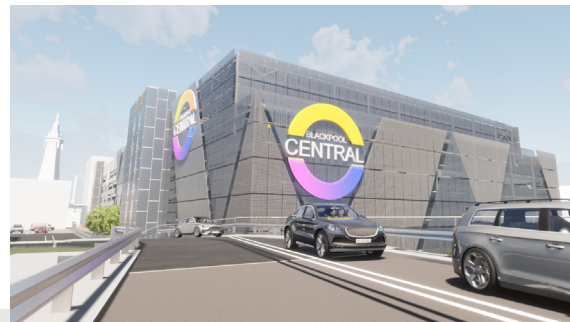
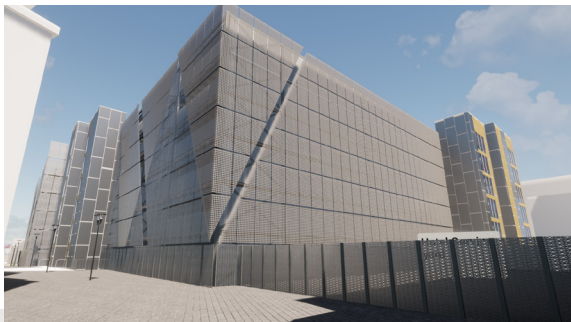
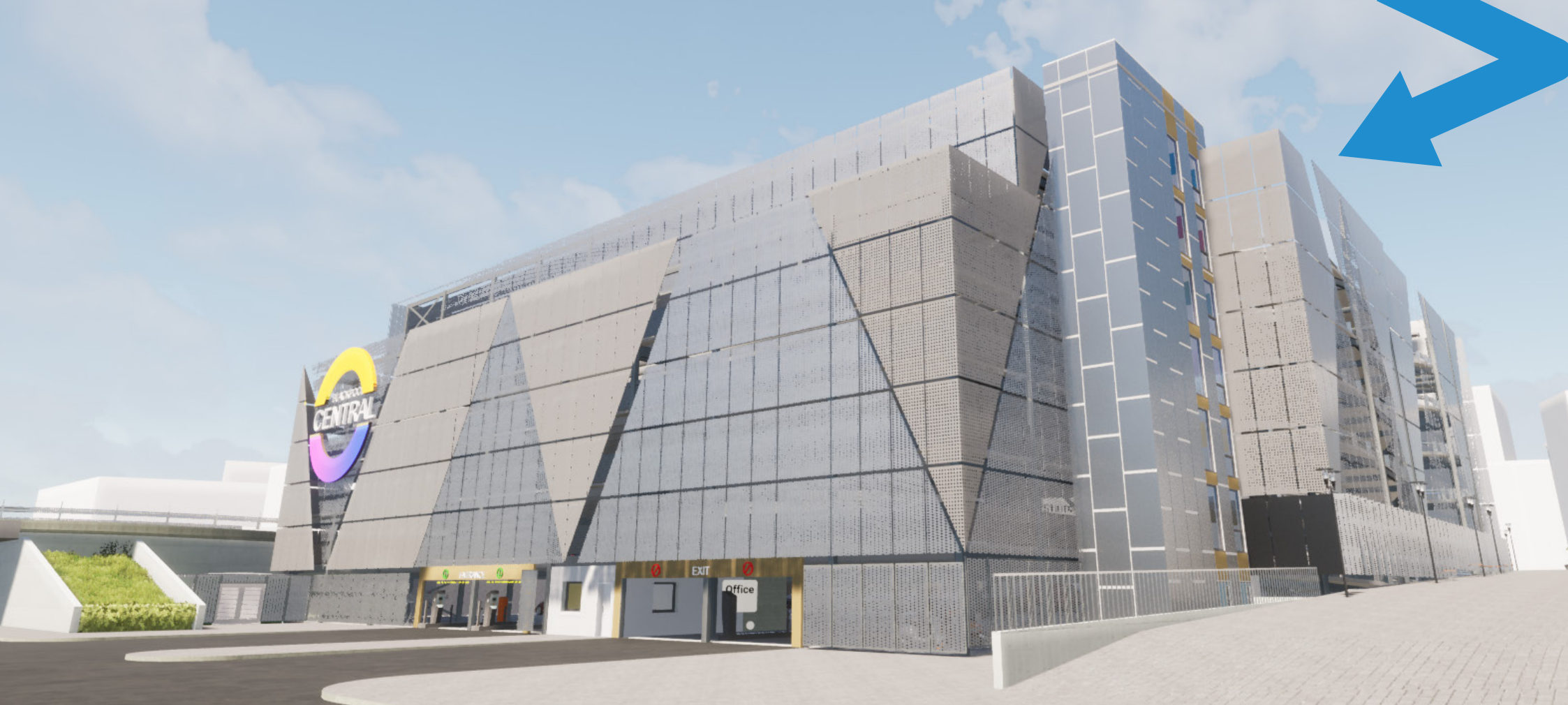
The structure features ground floor plus 5 parking decks with external ramps to facilitate swift access and egress during peak periods. This future thinking transport HUB includes generous 2.5 x 5m parking bays, electric vehicle charging points, both cycle and motorbike storage and thanks to the sustainable nature of the Ballast Nedam system build, offers future possibilities for adaptation.

Richard Fee – CEO for Nikal commented 'The design and planning stage has been a hugely successful experience – A collaborative team effort during the



Ballast Nedam

Parking



Ballast Nedam

Parking

pandemic - which saw much of the detail of the project being worked up remotely. I am looking forward to seeing their vision for the new MSCP progressing on-site'

Russell Simmons, Managing Director of Ballast Nedam Parking commented "The whole team are proud that Ballast Nedam have been selected to provide an integral aspect of the regeneration scheme, and we really look forward to

watching the site progress, as well as days out at the seaside in this iconic English town!"

The car park marks the first steps in the enabling works for the new Blackpool Central Leisure complex, and as such is time critical. As the Ballast Nedam system is a modular solution, the on-site programme is far shorter than for traditional build methods.