



Birmingham City Hospital

Brief: To design and construct the structure and cores for a new multi-storey car park

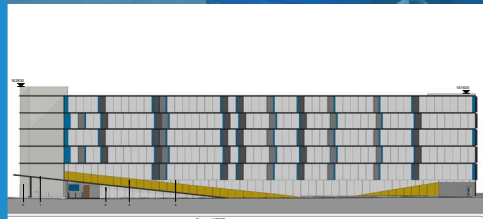
Client: Vinci Construction UK for Prime PLC

Contract Value: Confidential

Construction Period: 10 weeks

Configuration: 550 parking bays. GF + 5. VCM ramps
Perforated cladding panels

Status: On-site



Ballast Nedam Parking UK are currently on site constructing the 'base build' for this project. Working with the project architects and Vinci Construction, we optimised the design of the car park to provide the most economical and user-friendly solution using standardised modules from our system build wherever possible.

The car park features 2 pre-cast stair cores and will be wrapped in contrasting panel cladding which works in harmony with the façade of the main hospital building.

Working in a busy city hospital environment during the peak of

the Covid-19 pandemic has meant that extra safety precautions were required for all site crew. The car park is being constructed on a site in the middle of the still operational surface level car park and so the site boundaries are tight to minimise disruption to patients and visitors. Remarkably, and despite the additional operational challenges, the build is running to schedule.

West Midlands NHS trust are looking forward to a increasing parking capacity with a quality solution delivered in the shortest of timeframes which requires very little ongoing maintenance.



Ballast Nedam

Parking