



Sandwell General Hospital

Brief: To design and construct the structure and cores for a new multi-storey car park

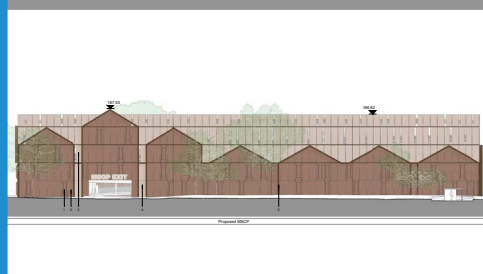
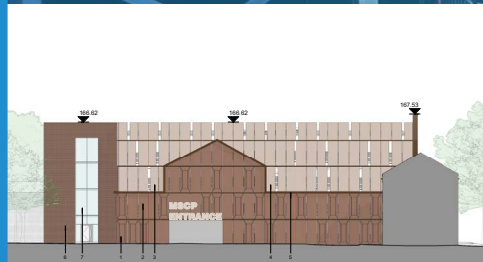
Client: Vinci Construction UK for Prime PLC

Contract Value: Confidential

Construction Period: 10 weeks

Configuration: 400 parking bays. GF + 3. VCM ramps
Anodised aluminium cladding

Status: On-site



Ballast Nedam Parking UK are currently on site constructing the 'base build' for this project. Working with the project architects and Vinci Construction, we optimised the design of the car park to provide the most economical and user-friendly solution using standardised modules from our system build wherever possible.

The car park features 2 pre-cast stair cores and will be wrapped in a stylish architectural cladding

depicting industrial scenes from the Black Country.

Access to the site is restricted and flanked by residential properties and thus deliveries of site materials were carefully coordinated to ensure minimal disruption.

West Midlands NHS trust are looking forward to increasing parking capacity with a quality solution delivered in the shortest of timeframes which requires very little ongoing maintenance.



Ballast Nedam

Parking